



**REGIONAL SPECIALISED METEOROLOGICAL CENTRE-TROPICAL CYCLONES, NEW DELHI
TROPICAL WEATHER OUTLOOK**

DEMS-RSMC TROPICAL CYCLONES NEW DELHI DATED 18.12.2024

TROPICAL WEATHER OUTLOOK FOR THE NORTH INDIAN OCEAN (THE BAY OF BENGAL AND THE ARABIAN SEA) VALID FOR THE NEXT 168 HOURS ISSUED AT 0600 UTC OF 18.12.2024 BASED ON 0300 UTC OF 18.12.2024.

BAY OF BENGAL:

YESTERDAY'S LOW PRESSURE AREA OVER SOUTHWEST BAY OF BENGAL WITH THE ASSOCIATED CYCLONIC CIRCULATION EXTENDING UPTO 5.8 KM ABOVE MEAN SEA LEVEL BECAME MORE MARKED AND NOW LAY OVER THE SAME REGION AT 0300 UTC OF TODAY, THE 18TH OF DECEMBER 2024.. IT IS LIKELY TO MOVE NEARLY NORTHWESTWARDS TOWARDS NORTH TAMIL NADU AND SOUTH ANDHRA PRADESH COAST DURING NEXT 24 HOURS. THEREAFTER, IT IS LIKELY TO MOVE NEARLY NORTHWARDS ALONG ANDHRA PRADESH COAST IN SUBSEQUENT 24 HOURS.

SCATTERED TO BROKEN LOW AND MEDIUM CLOUDS WITH EMBEDDED INTENSE TO VERY INTENSE CONVECTION LAY OVER CENTRAL & SOUTH BAY OF BENGAL AND SOUTH ANDAMAN SEA. MINIMUM CLOUD TOP TEMPERATURE IS MINUS 70-85 DEGREE CELSIUS. SCATTERED LOW AND MEDIUM CLOUDS WITH EMBEDDED MODERATE TO INTENSE CONVECTION LAY OVER NORTHWEST BAY OF BENGAL.

***PROBABILITY OF CYCLOGENESIS (FORMATION OF DEPRESSION) DURING NEXT 168 HRS:**

24 HOURS	24-48 HOURS	48-72 HOURS	72-96 HOURS	96-120 HOURS	120-144 HOURS	144-168 HOURS
NIL	NIL	NIL	NIL	NIL	NIL	NIL

***NOTE: EVERY 24HR FORECAST IS VALID UPTO 0300 UTC (0830 IST) OF NEXT DAY**

ARABIAN SEA:

SCATTERED TO BROKEN LOW AND MEDIUM CLOUDS WITH EMBEDDED INTENSE TO VERY INTENSE CONVECTION LAY OVER SOUTH CENTRAL ARABIAN SEA, MALDIVES AREA AND ADJOINING EQUATORIAL INDIAN OCEAN. MINIMUM CLOUD TOP TEMPERATURE IS MINUS 75-85 DEGREE CELSIUS. ISOLATED LOW AND MEDIUM CLOUDS WITH EMBEDDED MODERATE TO INTENSE CONVECTION LAY OVER COMORIN AREA AND ISOLATED WEAK TO MODERATE CONVECTION LAY OVER NORTH ARABIAN SEA.

***PROBABILITY OF CYCLOGENESIS (FORMATION OF DEPRESSION) DURING NEXT 168 HRS:**

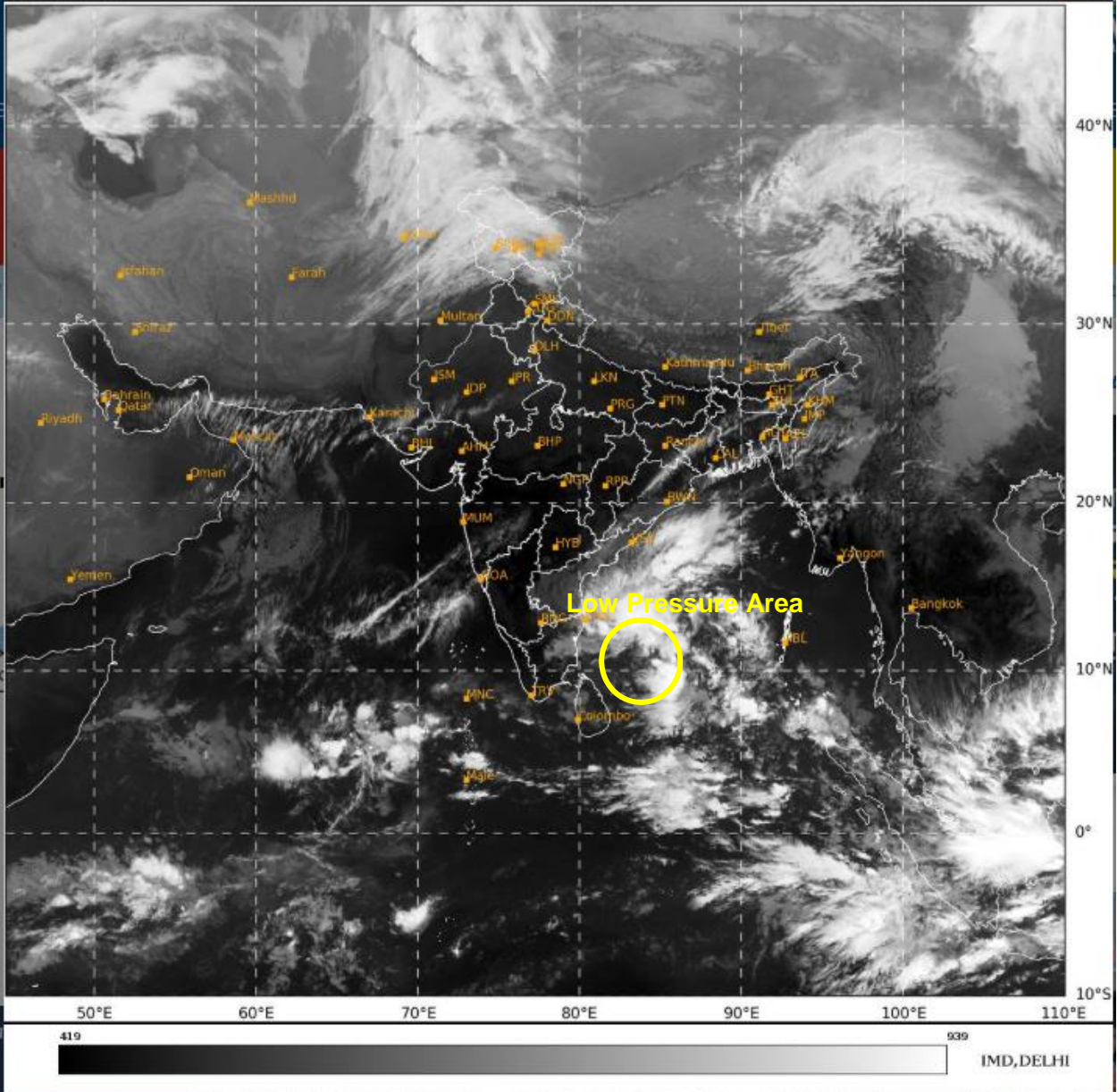
24 HOURS	24-48 HOURS	48-72 HOURS	72-96 HOURS	96-120 HOURS	120-144 HOURS	144-168 HOURS
NIL	NIL	NIL	NIL	NIL	NIL	NIL

***NOTE: EVERY 24HR FORECAST IS VALID UPTO 0300 UTC (0830 IST) OF NEXT DAY**

REMARKS: NIL

SAT : INSAT-3DR IMG
IMG_TIR1 10.8 um
LIC Mercator

18-12-2024/(0445 to 0512) GMT
18-12-2024/(1015 to 1042) IST



Cloud distribution: (a) Isolated: <25%, Scattered:25-50%, Broken: 51-75%, Solid:>75%, Convection Intensity: (a) Weak: Cloud Top Temperature (CTT) >-25°C, (b) Moderate: CTT: - 25°C to -40°C, (c) Intense: CTT: - 41°C to -70°C and (d) Very Intense: : Less than -70°C
PROBABILITY OF CYCLOGENESIS (FORMATION OF DEPRESSION):NIL: 0%, LOW: 1-33%, , MODERATE: 34-66% AND HIGH: 67-100%
This is a guidance Bulletin for WMO/ESCAP Panel Member countries. Visit respective National websites for Country specific Bulletins